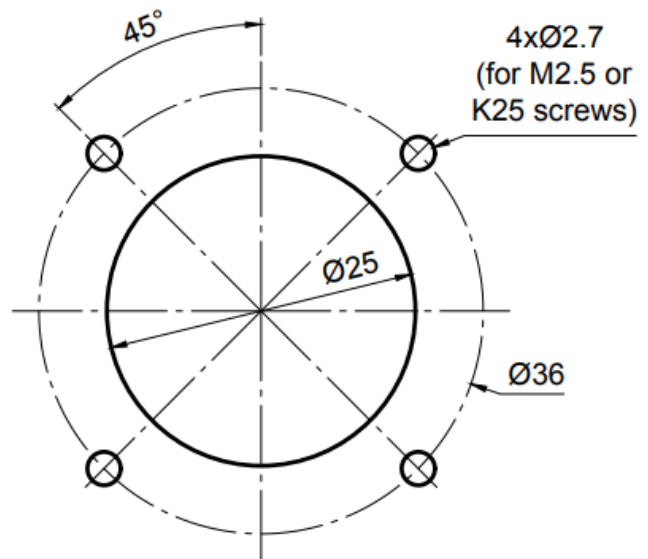
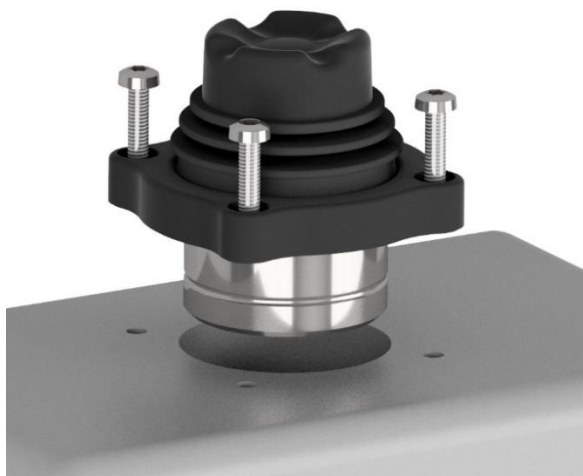


220 Series

Top mounted joystick



Exploded view of top mounted joystick

Customer's panel mounting cut-out. M2.5 or self-drilling screws for thermoplastic (Ø2.5 / K25) are required for mounting. Self-drilling hole needs to be done as specified by manufacturer. Screw length depends on panel thickness. All panel cut-outs should be free from sharp edges that may damage the bellows and flat surface (plain). Important for sealing. Blind holes are required for a sealed solution. Without respecting these requirements GT Joysticks AG cannot give warranty.