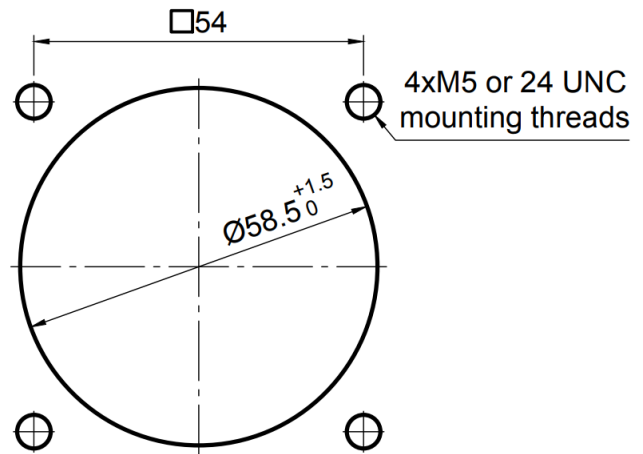


SK212 Series

Bottom mounted joystick



Exploded view of bottom mounted joystick



Customer's panel mounting cut-out.
M5 or 24 UNC screws are required for mounting.
Screw length depends on panel thickness.
All panel cut-outs should be free from sharp edges that may damage the bellows and flat surface (plain). Important for sealing.
Blind holes are required for a sealed solution.
Without respecting these requirements GT Joysticks AG cannot give warranty.