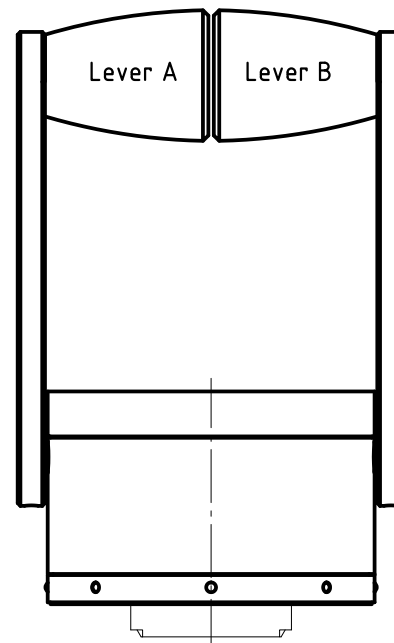
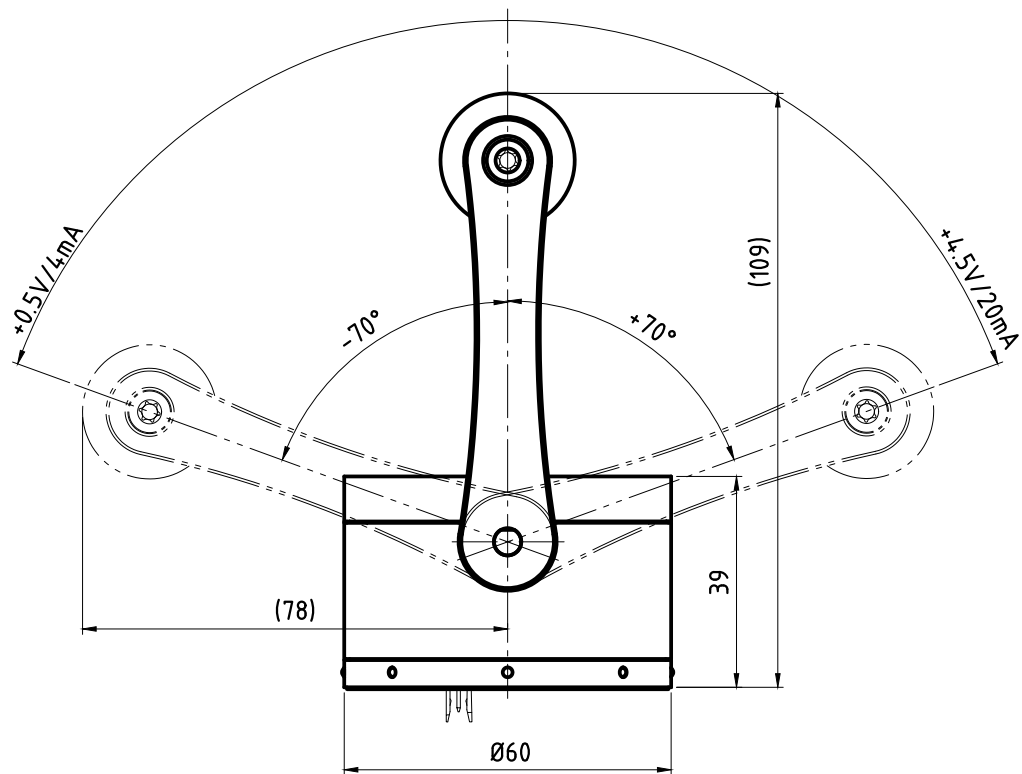


Neutral point (+2.5V/12mA)

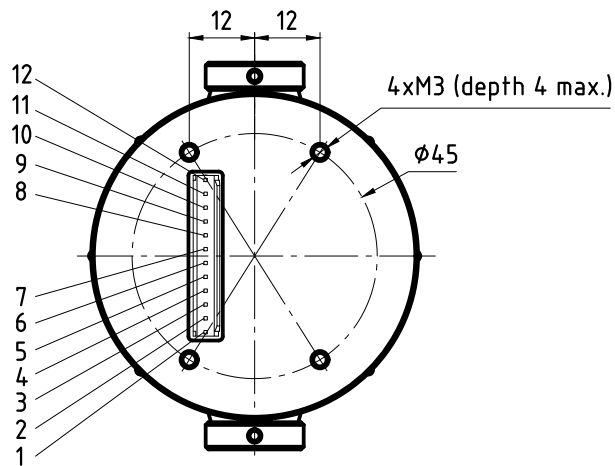


**Description**

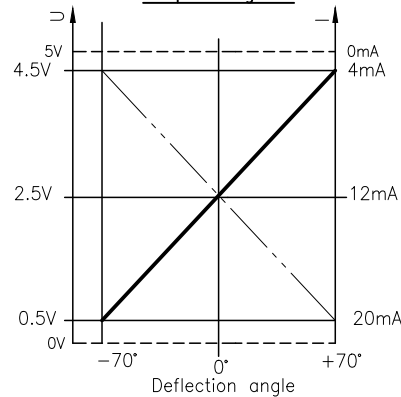
Marine controller type BS 140-002	
Operation by	Dual lever command, independent control of lever A and B
Deflection angle	2x70°
Neutral position	Non-locking, snap-in point
Connector DUBOX Walled Header	12-poles 76384-312
Mating connector DUBOX Housing	12-poles 65240-012
Special	LED illumination, dimmable, red

**Pin assignment**

1	Input Handle A, 10 ... 60 V DC
2	Ground Handle A, (0V)
3	Input Handle B, 10 ... 60 V DC
4	Ground Handle B, (0V) / Ext. 100kOhm potentiometer (-)
5	Wiper signal for external potentiometer
6	Output Handle B (U) (-70°=0.5V/0°=2.5V/+70°=4.5V)
7	Output Handle A (U) (-70°=0.5V/0°=2.5V/+70°=4.5V)
8	Do not use
9	Output Handle B (I) (-70°=4mA/0°=12mA/+70°=20mA)
10	Output Handle A (I) (-70°=4mA/0°=12mA/+70°=20mA)
11	External 100kOhm potentiometer (+)
12	Do not use



**Output diagram**



		Oberfläche	Maßstab 1:1	Position	Menge
		Datum	Name		
		Bearb. 07.12.10	Kiener M.		
		Gepr. 04.06.18	CH		
		Norm			
d	Binbelegung korrigiert	24.10.13	MK		
c	Div. Änderungen	15.06.11	MK		
b	Elect. Änderungen	07.12.10	MK		
a	Div. Änderungen		MK		
Zust.	Änderungen	Datum	Name	Dateiname	E:\Dwn\BS140\...140-002d.dwg
		<b>GENGE &amp; THOMA AG</b>		Blatt	
		OH-2543 Lengnau/Blai		140-002d	
				Bl	